

### About Us

BioMed Therapeutics is a treatment and research center dedicated to research and Regenerative Medicine.

Our protocols are based on the treatment of chronic diseases with a comprehensive approach, combining Stem Cell Treatment, intestinal microflora therapy, Orthomolecular Medicine and Specialized Diets for patients to improve their quality of life in the most natural possible way.

Thereby, the treatments are customized for each specific case. In cases where the patient has a conventional treatment, ours adjusts to it.

Each protocol is discussed carefully and is formulated on the basis of the needs of each patient evaluating the clinical and laboratory test results.

Monitoring during and after treatment is essential for the team physician as each individual may react differently to therapy. Therefore, in many cases, the protocol is adjusted according to the patient's progress to achieve the best possible results.

design by estetudio.com



## TREATMENTS



Autism

Diabetes



Gut Flora

Rheumatic Disease



Parkinson Disease

Orthomolecular Medicina



Alzheimer

Aesthetics



MS



### What Are Adult Stem Cells ?

Stem Cells are cells that have the remarkable potential to develop into many different cell types in the body during early life and growth.

Stem cells are distinguished from other cell types by two important characteristics.

- They are unspecialized cells capable of renewing themselves through cell division.
- Under certain physiologic or experimental conditions, they can be induced to become tissue, or organ-specific cells with special functions

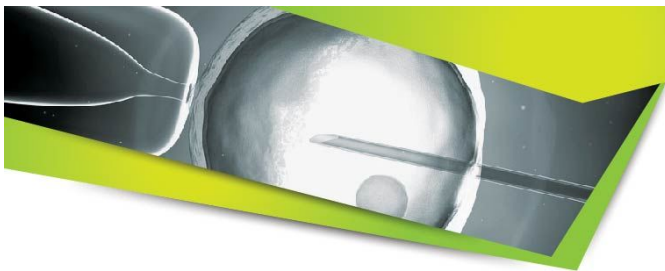
Adult Stem Cells are undifferentiated cells, found amongst differentiated cells in a tissue or organ that have the ability to renew themselves and can differentiate to yield some or all of the major specialized cell types of the tissue or organ. The primary roles of adult stem cells in a living organism are to maintain and repair the tissue in which they are found.

Phone. (+507) 204 8615 / 17

Blvd. Punta Pacífica | Consultorios Médicos Punta Pacífica  
Piso 6, Consultorio 627 | Panama City  
Republic of Panama



www.biomedpanama.com



## Use of Stem Cells in Therapeutics

Medical researchers believe that stem cell treatments have the potential to change the face of human disease and may be able to repair or replace damaged tissue, thereby reversing diseases and injuries. Scientists are studying the use of stem cells for Diabetes, Cancer, Cardiovascular Disease, Alzheimer's, Parkinson's, Autoimmune Disease, Blood Diseases, Spinal Injuries.

The field has progressed to the clinic and it is important that this pathway is done by excellent science and rigorous standards of clinical research.

## Treatments

### Autism

Most of ASDs patients suffer from a chronic inflammation of the intestinal tract (GI) as well as an inflammation in certain parts of their brain. The latest CDC statistics shows that 1 of 88 children suffer autism, with 1 of 54 boys being affected. According to the Wall Street Journal, autism is the number 1 public health crisis facing the United States.

#### Biological therapy for autism.

In our center, we specialize in the integral treatment of autism. We offer each patient a specifically tailored combination of treatments, guided by diagnostic tests, and interventions that include:

- Dietary changes.
- Dietary supplements (probiotics, anti-oxidants, nutrients).
- Pharmacological therapy (guided by genetic analysis) against pathogens known to influence human behavior.
- Detoxification of heavy metals.
- Hyperbaric oxygen therapy.
- Stem Cell therapy.
- Gut Flora Transplant

### Diabetes

Diabetes mellitus is a group of metabolic diseases characterized by an increase in blood glucose due to a lack of secretion of the hormone insulin, or a failure in the action of insulin, or both.

There are two main types of diabetes:

- **Type 1 diabetes:** This type of diabetes is known as 'insulin dependent'. It is caused by the destruction of the beta cells of the pancreas, which are responsible for making insulin. There are several possible reasons for the destruction of these cells which may be caused by genetic, autoimmune or pathogenic processes.
- **Type 2 diabetes:** Known as 'non-insulin dependent' is characterized by an inability of cells to respond adequately to a normal level of insulin.

### Gut Intestinal

The bacteria and other microorganisms that live in the intestine make up the intestinal microflora. These can be categorized as beneficial microorganisms or pathogens. The beneficial living within us develop important activities that help us digest, absorb, and metabolize food, lower cholesterol, synthesize vitamins, develop and/or activate the immune system, inhibit the growth of pathogens, decrease bloating gas and other. Adverse effects include carcinogenic substances production, intestinal putrefaction, toxin production, diarrhea/constipation, liver damage, intestinal inflammation and other diseases.

Scientific research has identified specific strains that can induce health benefits of the host. The therapeutic approach is to lead an increase of the amount of health-promoting microorganisms in the intestine and achieve a beneficial balance. Although it may seem an easy task, it is not. Each person has a different microflora. Therefore, treatment should be directed and personalized for each patient individually. Foods and supplements taken should have anti-inflammatory effect and should selectively promote the growth of the bacteria that colonize the intestinal tract. This is accomplished by studying the gut flora of each person and clinical analysis carried out by the physician.

This approach has already been proposed and used in treatments for diseases such as generalized developmental disorders, inflammatory bowel disease, ulcerative colitis, metabolic syndrome, diabetes, neurodegenerative diseases and autoimmune diseases.

### Rheumatic Disease

We treat the following conditions:

- Rheumatoid arthritis.
- Osteoarthritis.
- Repair of damaged bone and cartilage

Rheumatic disease is a chronic inflammatory systemic disease of the joints. The autoimmune causes are not yet well defined, but the pathology of the condition affects the synovia around joints, causing them to be swollen and painful whilst a destructive process takes place in the cartilages and sometimes the bone itself.

### MS

MS is an autoimmune disease. The body's own immune system, for unknown reasons, destroys the brain cells responsible for creating and maintaining the myelin sheath, which helps the neurons carry electrical impulses. MS symptoms typically include muscle spasms, problems with balance, speech problems, fatigue and chronic pain. Symptoms of MS usually appear in episodic acute periods of worsening (relapses).

### Parkinson Disease

Parkinson's disease occurs as a result of a gradual loss of a specific type of nerve cell located in an area of the brain called the substantia nigra. These nerve cells produce a natural chemical called dopamine (they are called dopaminergic neurons). The lack of dopamine makes patients with Parkinson's disease have difficulty in moving freely, holding a posture, talking and writing and other such tasks.

### Alzheimer

Alzheimer's disease is the most common cause of dementia among older people. Dementia is the loss of cognitive functioning—thinking, remembering, and reasoning—and behavioral abilities, to such an extent that it interferes with a person's daily life and activities.



### Aesthetics

#### PLATELETS RICH IN PLASMA

Platelets rich in plasma are revolutionary treatment used for anti aging and regeneration in various areas. The procedure involves taking the patients blood sample and then this is re inserted with their own blood concentrated with platelets. This platelets contain proteins and growth factors which will help to increase irrigation of the area, and the new formation of collagen, elastin and other substances.

#### Alopecia

Platelet Rich Plasma is a cutting edge treatment used to regenerate hair growth for conditions such as alopecia.

The concentrated platelets contain proteins and growth factors which help increase circulation to the hair follicles, stimulate the follicles to grow, and also thicken the hair shaft.

#### Non-Surgical Facial Regeneration

This is a cutting-edge aesthetic medical treatment with which shows results immediately after applying it such as increased skin brightness, decrease of fine wrinkles and expression lines. Also acts on areas of greatest sagging, raising the tone of the same.

The bio stimulation together with PRP (Platelet Rich Plasma) is a technique that activates functions of fibroblast, and the formation of new collagen, elastin and hyaluronic acid, through the intradermal application of plasma rich in platelets that regenerates tissues.

### Orthomolecular Medicine

Orthomolecular medicine based its principles on the prevention and treatment of disease by providing the body with the optimal concentration of micronutrients that are present in our body, in order to correct abnormalities and maintaining good health.

These cellular micronutrients are vitamins, minerals, trace elements, fatty acids, amino acids, enzymes, etc..

In diseases such as arthritis, hypertension, obesity, coronary heart disease and cerebrovascular disease, memory loss, diabetes and where conventional medicine offers no answers, orthomolecular medicine presents an alternative.

Combating the pre-existing disease may return the engine running, knowing how to prevent future derangements to maintain quality of life. Orthomolecular medicine arrive earlier, being able to repair a biochemical micronutrient altered. The word orthomolecular means molecular balance and this medicine aims to repair the imbalance that occurs in cells.